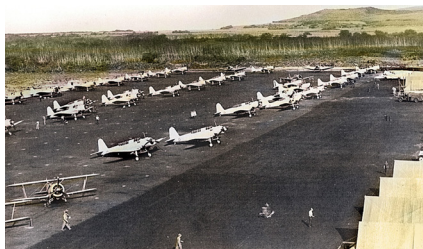


## WWII Revetment District

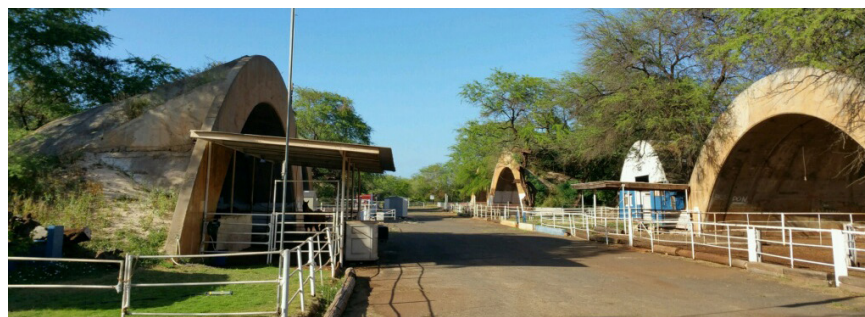
From HABS no. HI-279-A: "The December 7, 1941 Japanese surprise attack on military bases in Hawaii devastated almost all aircraft parked on the airstrips in Hawaii. As a reaction to the proven vulnerability of exposed aircraft, these revetments were erected in 1942 to provide protection "for carrier based planes", according to drawings dated April 25, 1942. This grouping is by far the largest grouping of revetments of any kind still extant in the Pacific area. In addition, they are significant because these revetments are the only known example of this type of revetment in the Pacific and are a distinctive construction type."



All Historical Photos: US Archives



"Tora, Tora, Tora" 20th Century Fox



Courtesy Barbers Point Riding Club

## Barbers Point Riding Club

Approximately 25 acres of Ewa Field's WWII Revetment District has been adaptively reused as a Military Horse Stables since 1960.

The Barbers Point Riding Club is governed by a volunteer Board and operates within the confines of the unique Historic WWII Revetment District. In addition to offering affordable recreation, the Club's mission has expanded to include protecting, preserving, and stewarding this Cultural Resource.

In June 2016, the Barbers Point Riding Club was awarded a \$63,000 grant award from the American Battlefield Protection Program to fund the Ewa Field Revetment District Delineation and National Register Nomination. For further information contact Valerie Van der Veer at [SLAMMERF16@AOL.COM](mailto:SLAMMERF16@AOL.COM)